

VISIONS



February 2010

In general, February is not my favorite month. Other than Valentine's Day there are not many bright spots! It is by this point in the winter when the lack of green plants and life outside has become too much for me. Everything can feel dreary and dull during February. It doesn't help much that I live with a Colombian transplant from South America who **really, really** hates winter!!!

Yet, in the dreariness of February there is also promise....

- ✚ We begin Lent on February 17th, a time of reflection and preparation for the joy of Easter Resurrection.
- ✚ Our congregational meeting on February 7th when we will celebrate our ministry and witness to this community for 2009 and look forward with anticipation to what God will *have us* do and what God *will do* in our midst during the upcoming year.
- ✚ New ministries that are being planned and prepared for this month: a community garden this summer for North Plainfield to support FISH, discussions with prospective field education students for 2010-2011, a new adult education class that will be co-taught by Andrew and myself beginning February 21st, and leadership preparations for our children's and youth ministries.

These are some of the things in the life our community that I am looking forward to this February. I also take some comfort in knowing that I am not alone in my end-of-winter mental slump when I look outside to the cold air and the dormant trees and plants. But, outside the windows of my office is the magnificent pink dogwood tree that lives in the front yard of our church property. I love this tree, it was at the peak of its flowers last May when I first arrived—vibrant, bright pink flowers open and turned towards the sun. I look at this tree every day and this week I noticed that the buds are all there, ready for spring. They are closed tightly to guard their growing flowers that will begin to open up in a few months' time. But the buds are there, the tree is covered with them. We are like this tree: sometimes we are flowering, other times we are in full bloom, and still other times we are closed up tightly as the inner and unseen work of preparation happens. How is God's Spirit living in your life? Are you just beginning to open up, are you in full bloom, or are you closed in right now as you prepare for a new thing in your life? All of the stages of our spiritual journey are good ones, they happen at all times of our lives—and God is present in each one.

“And then he showed me a little thing, the size of a hazelnut, lying in the palm of my hand, as it seemed to me. It was as round as a ball. I looked at it with the eye of my understanding and thought, *What can this be?* It was answered generally thus: ‘It is all that is made.’ I marveled that it could last, for it was so little that it could suddenly have become nothing. It was answered in my understanding, ‘It lasts and ever shall, for God loves it.’ And so everything has being by the love of God. In this little thing I saw three properties. The first is that God made it, the second that God loves it, and the third that God keeps it.”
-Julian of Norwich, *Showings*

Peace to you this February and we give thanks for the promises we trust in as we begin Lent!

Peace,



Rev. Shannan Vance-Ocampo

Watchung Avenue Presbyterian Church
170 Watchung Avenue
North Plainfield, NJ 07060

Telephone: 908-755-2781 / 2775
Email: wapc@verizon.net
Web: www.wapc.net
Fax: 908-756-7981

FEBRUARY WORSHIP

February 7th: **Souper bowl of Caring**

Sacrament: Communion

Scripture: Isaiah 6:1-13 &
Luke 5:1-11

Sermon: "Kicking and Screaming"

February 14th: **Transfiguration of the Lord**

Installation and Ordination of Elders and Deacons

Scripture: Exodus 34:29-35 &
Luke 9:28-36

Sermon: "Keeping Secrets"

February 17th: **Ash Wednesday Service 7:30pm**

Scripture: Isaiah 58:1-12 &
Matthew 6:1-21

Sermon: "How do we Begin Lent"

February 21st: **First Sunday in Lent**

Scripture: Deuteronomy 26:1-11 &
Luke 4:1-13

Sermon: "Can Jesus do the Right Thing?"

February 28th: **Second Sunday in Lent**

-Andrew Scales Preaching

Scripture: Psalm 27 & Luke 13:31-35

Sermon: "Wait for the Lord"

CONGREGATIONAL MEETING

The Annual Meeting of the Congregation and Corporation of the Watchung Avenue Presbyterian Church will be held on Sunday, February 7, 2010 at 11:30 a.m. in the Parish Hall.

The purpose of the meeting is to receive the 2009 Annual Report and the 2010 Budget, Elect Officers, Vote on the 2010 Terms of Call for our Pastor and transact any other business that may properly come before the meeting.

—Gwyn Gronlund, Clerk of Session

We will share lunch in the Parish Hall immediately after worship followed by our meeting. Childcare will be provided free of charge during the congregational meeting (kids have lunch first up in the Parish Hall). If you are in need of childcare during the congregational meeting, please **RSVP** to Kathleen, in the church office by **February 1st**.

ANNUAL REPORTS ARE AVAILABLE IN THE MISSION ROOM

A NOTE AFTER THE STATED MEETING OF THE PRESBYTERY OF ELIZABETH

"Thank you for your hospitality."

"What a wonderful group of people you have here!"

"What a lovely, light room this is."

"We were happy to have our meeting here and should hold it here more often."

These were words heard throughout WAPC on Saturday, January 23 during the monthly Stated Meeting of the Presbytery of Elizabeth. Members of the 50 churches in our Presbytery came to WAPC, many for the first time, to wrestle with issues common to our connected congregations. Their visit was made as pleasant as possible by close to 50 members of our congregation. As Chair of the Fellowship Committee which organized the day, I was proud of the work everyone did and the care given to our facilities every day, and hope that you are pleased by the responses to our efforts from those who attended the meeting. Thank you, everyone, for your help that day.

Dianne Ledder
Fellowship Committee Chair

NEW BIBLE STUDY TIME

The Tuesday morning Bible study has been changed to Wednesday mornings from 10-11:30am. We have made this time change to enable more people to join us; we pray that YOU will be one of them as we discuss biblical texts every week and how they relate to our lives. All experience levels with reading the Bible are welcome—we are a very open and welcoming group of people and we hope you'll join us!!! This class is led each week by Pastor Shannan.

UPCOMING LOCAL EVENTS

Take a look at these great regional/local activities that you can register to attend to enhance your spiritual journey!

Stony Point Center, NY

www.stonypointcenter.org

February 5-7, Loving Hands Retreat—focus on prayer shawl ministry

March 21-23, Ministering to the Missing Generation—focusing on how churches can best reach out to young adults and engage them in ministry

April 15-17, Presbyterian Peace Fellowship Convocation—led by Rev. Obery Hendricks of New York Theological Seminary

May 7-8, Women Who Nurture—a retreat focused on mothers and renewing your spirit

Princeton Theological Seminary

www.ptsem.edu

March 2—The Interfaith Amigos, An Evening of Conversation with a Rabbi, Pastor and Sheikh and how to talk to others of different religious faiths than our own.

ADULT STUDY OPPORTUNITY DURING LENT

Pastor Shannan and Seminarian Andrew Scales will be teaching an adult education class during Lent on the different ways that Jesus is depicted in the Gospels (Matthew, Mark, Luke, and John).

Each week will focus on a different biblical name or theme about Jesus. Participants will be asked to reach a short essay the week before each class, that will then be the basis of our conversations each week. The class will be held on **Sundays from 11:30-1pm from February 21 to March 28**. The majority of the classes will be taught by Andrew, which is part of his learning for this year as he leads adult education (Andrew will teach four weeks, Shannan will teach two weeks).

Please sign up for the class with Kathleen Golmont in the church office **by February 13**, so that we can send you the reading for the first week. The preferred method for sending readings each week is via email, but if you do not have email—we will mail the readings to you and you can also pick them up during class.

We hope everyone will join us as we reflect on Jesus during Lent this year! If you are interested in attending the class and would like childcare, please let us know and we can work on arranging that.



PANCAKE SUPPER

A Pancake Supper will be held on Shrove Tuesday, **February 16th at 6pm**. The cost is \$5 for adults and \$3 for children 10 and under.

Join us for good food (pancakes, sausage, fruit, salad and beverages), fellowship and fun.

Tickets can be purchased Sundays in the Parish Hall.

ASH WEDNESDAY SERVICE

The Ash Wednesday Service is on **February 17th at 7:30pm** in the Sanctuary. Please join us as we begin the Season of Lent with worship

ACT

Save the date of **March 13th** for our next ACT get together in the Parish Hall. Look for sign-up on bulletin board.



SOUP-A-THON

Sunday, **March 21st @ 12 Noon**, Parish Hall.

Enjoy a variety of soups and dessert too! Tickets are \$6 for adults and \$3 for children 10 & under.

Tickets will be on sale during coffee hour.

If you would like to donate a soup, call Estelle at 908-756-2077. If you would like to donate a dessert call Peggy 908-668-0051 or Faye 908-755-8413. Please send a copy of your dessert or soup recipe to the church office, ASAP so we may print a book of recipes!

Get your appetite ready and join us for great food and a great time.

YOUTH GROUP

Sunday February 7

No Confirmation Class-Annual Meeting! Youth who would like to work on the youth room during the Annual Meeting can meet up with Andrew Scales....He'll be doing this while the meeting is taking place!

Sunday February 14

11:30-1pm, Youth Group

Sunday February 21

11:30-1pm, Confirmation Class

Sunday February 28

11:30-1pm, Youth Group

CROP REPORT

The forecast for CROP Sunday was for a very stormy day. We didn't get the rain but it was chilly and windy. However, 42 hearty souls braved the conditions and participated in the 2009 Plainfield/North Plainfield CROP walk. The walk earned \$7,410.50. While down from previous years, nonetheless an excellent job considering the number of walkers.

The top 5 fundraisers were: 1-Dianne Ledder, Watchung Ave. Pres.; 2-Phil Anderson, Plainfield Elks; 3-Gwyn Gronlund, Watchung Ave. Pres.; 4-Barbara P. Wallace, United Church of Christ and 5-Ellen Lake, Watchung Ave. Pres.

In addition to the above those earning \$200 or more for WAPC were: W. Fabricius, J. Lake and R. Weissenburger. Those earning \$100 or more: L. Durick, S. Durick and A. Lester

We want to thank everyone who walked or helped in any way!

May God bless you all!

With appreciation,

Tom Ledder, Coordinator/Asst. Treasure

Al Smith, Treasurer/Asst. Coordinator

PS-If anyone hasn't turned in their money yet it's never too late!!!!



Louise Thul created a prayer shawl for Sandra Hernandez. Gwyn Gronlund knitted a prayer shawl for Beverly Krausse



. Heidi Rapach received a shawl from Leslie Hansen.

PRAYER SHAWL MINISTRY

The Prayer Shawl Ministry continues to meet monthly. We stitch at our meetings and on our own time to create comforting shawls. Five shawls have so far been presented.

Our next evening meeting will be Tuesday, February 23, at the home of Gwyn Gronlund at 7 pm. We have a time of quiet, prayerful stitching, plan our projects, and have refreshments, of course. All are welcome to join.

The next Sunday workshop to learn to knit or crochet or improve your skills will be postponed until after Lent.

You may speak to Gwyn Gronlund for more information (908) 754-1251

CONGRATULATIONS!

On January 24th we honored the four most recent births in our congregation: Zamea Elyse Smith, October 15, 2009; Chase Michael and Lyla Anne Rapach, November 28, 2009 and Fiona Madeline Murphy, January 11, 2010. Congratulations to one and all.

NEW GROUP AT WAPC



We are beginning a group at the church to talk about our faith and the environment. Our first meeting was held in January, and we will be holding our next meeting on Wednesday February 24th at 6:30pm. Anyone in the church who is interested in talking about the environment and our faith is welcome to join us. Some things we are working on:

1. Having an energy audit of our church facility done to assess our energy use and make a plan for lessening our environmental impact and our utility bills at the church.
2. Celebrating a special worship service focused on the environment in April
3. Continuing our growing connection to GreenFaith, a NJ-based national interfaith environmental ministry
4. Being a hosting site in November for a GreenFaith regional conference on the environment that will be in conjunction with the Elizabeth Presbytery environmental group and other local partners
5. An adult education program in 2010 about ecology and Christian faith
6. The project we are very excited about, a jointly run Community Garden on the grounds of the Church of the Holy Cross here in North Plainfield that will begin to be organized over the next month. This will be open to all churches in North Plainfield to participate in. All the food grown in our garden will go to the hungry in our community and will be a great new way for us to be reaching out to those in our community! If you are interested in being a part of the garden group or want to work on the garden, let Shannan know!
7. Pick up a special lent calendar in the mission room to make Care of Creation part of lent this year!

Interested in learning more about our faith and the environment? Check out these websites for more information:

www.greenfaith.org GreenFaith
www.pcusa.org/environment Presbyterian Church (USA) Environmental Ministry Office
www.prcweb.org Presbyterians for Earth Care

GUEST SPEAKER AT WAPC

On **Thursday February 25th at 7pm** we will be hosting the Rev. Ermalou Roller who is a retired United Methodist minister from Illinois (and Shannan's former field education supervisor for two years while in seminary!) to lead a one-night only adult education class. Rev.



Roller has a fascinating background in ministry and in life, and will be speaking to us as part of her national pre-book tour. The book is titled: **Searching for the White Goose**. An excerpt: *"The overarching theme of Searching for the White Goose is that we must not allow church or secular*

cultures to limit our curiosity, wonder and God-given freedom to live authentically while cherishing the fullness and majesty of the creation. This book shows how we harm ourselves and others by imposing - or allowing others to impose - scripts on our lives and then feel ashamed because we can't fulfill them. I have the training, experience and credentials to write about these matters. I was an early feminist and part of the first, large wave of women to enter seminary in the 70's. I challenged racial, gender and sexual orientation stereotypes as a pastor, superintendent and dean of the cabinet of my conference. I was married to and divorced from a closeted gay man. I am the mother of a gay son. I know the price as well as the joy of stepping out of culturally imposed boxes."

We hope everyone will join us for this special evening as we listen to stories and are led by Rev. Roller. She is an engaging, exciting speaker and we are so pleased to welcome her to WAPC. **This event is open to anyone, so please bring your friends!**

ADULT MISSION TRIP

Crescent Ave. & Watchung Ave. would like to send a group of adults to serve with Presbyterian Disaster Assistance in New Orleans the week of **April 11**. If you are interested, please let Shannan know. This is a great way to continue to serve our friends in Christ in New Orleans.

CHURCH USAGE UPDATE

Beginning this October, Cristo mi Rey, the Latino Congregation that utilizes our space on Tuesday and Saturday evenings has moved their rental location in our building from the Sanctuary to the Parish Hall for their worship services. We realize that there are some nights that we have WAPC activities that use the Parish Hall. **We need to give them 30 days notice about conflicts, so if you know of one, or are scheduling an activity, please let Kathleen in the church office know ASAP.** If you have any questions, please be in touch with the Trustees.

iGIVE.com

Would you like to help the church with some extra income while you shop online? Follow these easy steps:

1. Go to www.igive.com
2. Create a free account for yourself
3. Designate Watchung Ave Presbyterian Church as your charity (using their navigation menu, go to NJ and then Religious/Spiritual Institutions)
4. Every time to shop online, first go to iGive.com and then go to your shopping sites FROM their website
5. Donations are automatically generated at NO cost to you (what this means is that vendors like LLBean, Amazon.com, etc. then give a % to us)
6. You can watch your shopping history and donations generated by your shopping on their calculator

Take a look at iGive's list of vendors! They have over 700 and counting—and almost all are popular websites you are probably already using. Ask your family and friends to sign up and help out our church! Thanks!

WOMEN'S CRAFT GROUP

Bring your scrapbooking, knitting, or other projects and come enjoy each other's company, plus get a break from your busy week. We meet on Friday evenings from 7:30 – 9:30 PM - sometimes in the church library and sometimes at someone's house. We even go on field trips occasionally! Come join us whenever you can – just call Gwyn Gronlund (908-754-1251) or Marilyn Cortright (home: 908-753-2859, cell: 908-295-4754) to find out where we will be meeting that week!

LET'S GET TOGETHER!

The Fellowship Committee under the WAPC Session has plans for some wonderful happenings in the coming months. To name a few:

- ❖ A Pancake Supper February 16,
- ❖ Recognition of our 50 year members

We are looking for people who want to help put these events together. If you are able to help with plans already under way, or if you have an idea that will give congregation members a chance to join together outside of worship, please let us know.

Dianne Ledder, Fellowship Elder
Peg Bunnell
Fay Steinau

2010 PER CAPITA AMOUNT

Our assessment from the **PCUSA** for 2010 is \$30 per member. If each member pays their share, it will free up money for other purposes. Place your \$30 in the per capita envelope in your envelope packet.

2010 OFFERING ENVELOPES

If you have not picked up your 2010 Offering Envelopes, please contact the office for a pick up time!

PRAYER LIST

Prayers of thanksgiving for Fiona Madeline Murphy who was born on January 11th.

Presbyterian Church (U.S.A.) *Mission Personnel in Haiti* and in the United States who are coordinating care. Especially for *Sharyn Babe*, who is one of our Mission Co-Workers and is injured and hospitalized in Florida.

Prayers of healing for *Yajaira Ortez*, ASP staff member who is hospitalized in NYC and needs a liver transplant.

Cathy Boleyn's father, who is recovering from a hospitalization.

Harry Krausse, who is at home.

Mary Wirth, Frank Dell Bene's mother and Pat's grandmother.

Beker Ixim, Michele Wallace-Ixim's husband detained in Guatemala.

Amanda Lake, prayers of strength and courage.

Agnes Marinelli, JoAnn Hoppe's Mother.

Frank Dell Bene, at home.

Helen Stagg, at home.

Vi Krieg, at home.

Alberta Vosburgh, at Arbor Glenn Continuing Care, Rm. 636.

Helen Miller, at home.

Edwin Estevez, Jr., our Seminarian.

Andrew Scales, Our Seminary Intern.

NORTH PLAINFIELD MEMORIAL LIBRARY

February 1st, 7-9pm, Interviewing Process for Job Seekers. Call to register 908.755.7909.

February 11th, 10am-12pm, Cholesterol Screening

March 11th, 10am-12pm, Bone Density

Call to register 1.800.247.9580.

ASP NEWS

Word association time...

ASP Rooms Downstairs: Mess!

Mess: Clean!

Clean: Disney?!

Believe it or not, that is the word association game the Program played this Monday. On January 18th, Martin Luther King Jr. Day, over 40 volunteers came to the W.A.P.C. to help beautify the downstairs ASP rooms. This "Marvelous Makeover" was part of Disney's current volunteer program, "Give A Day, Get A Day". Volunteers give a day of their time and in return, Disney gives them a pass for a day in one of their parks. Thanks to this program, the Program's two rooms downstairs were completely painted and reorganized in less than four hours! It was a magical, marvelous, and magnificent makeover! I invite everyone to view the downstairs ASP rooms when they have the time.

James Winston, Director
Embracing Change Through Character
170 Watchung Avenue
North Plainfield, New Jersey 07060
908-755-8202

NEWSLETTERS EMAILED

The church can save money on postage every month by emailing the newsletter to you rather than regular mail. You will receive your newsletter Thursday or Friday of that week "hot off the press". Please consider this option and email the church office at: wapc@verizon.net with your email address.

CHURCH OFFICE INFORMATION

Kathleen Golmont will be out of the office
February 1-5, 2010

The church office is closed on Monday
February 15, 2010 in observance of President's Day

March Birthdays

Dot Fenz	2-Mar
David Hansen	3-Mar
John Langan, Jr.	5-Mar
Kirsten Beck	6-Mar
Robin Savage	6-Mar
Julia Lake	7-Mar
Kelly Burke	7-Mar
Patrick Slattery	8-Mar
Donald Miller	9-Mar
Dianne Ledder	11-Mar
Miles Falck	12-Mar
Fran Young	13-Mar
John Kendall	14-Mar
Rachel Kendall	15-Mar
Erika Gerhard	18-Mar
Dorothy Blain	20-Mar
Susan Bunnell	21-Mar
David Hooker	22-Mar
Isobel Green	26-Mar
Alice Lester	28-Mar
Lorraine MacNamara	28-Mar
Beverly Krausse	31-Mar
Colleen Parlman	31-Mar

Worship Services & Regular Meetings

Regular Sunday Schedule:

9:00 a.m. Choir Rehearsal
 10:00 a.m. Worship
 10:20 a.m. Church School
 11:00 a.m. Coffee/Fellowship

Weekly

Wednesday Bible Study 10 a.m. in Lounge
 Wednesday Choir Rehearsal 7:30 p.m.
 Thursday Bible Study 7:30 p.m.-Lounge

Monthly

1st Sunday Holy Communion
 1st Sunday FISH (Food Bank) Collection
 1st & 3rd Sunday Confirmation Class(12-1:30)
 2nd Sunday Healing Service
 2nd Monday Session meets at 7:30 p.m.
 2nd Monday Trustee's Meeting at 7:30 p.m.
 2nd & 4th Sunday Youth Group 11:30-1p.m.
 4th Sunday Men's Breakfast
 4th Monday CHATS - 7:15 p.m. in Library

WAPC Schedule of Regular Events

Sunday Schedule:

9:00 a.m. Choir Rehearsal
 10:00 am Worship
 10:20 am Church School
 10:55 am Coffee/Fellowship

Monday Schedule

8:15 am Head Start
 2:30 pm ASP
 7:15 pm CHATS (4th Monday)
 7:30 pm Boy Scouts Parish Hall

Tuesday Schedule

8:15 am Head Start
 9:30 am WIC (Tuesday)
 2:30 pm ASP
 7-10 pm Iglesia Cristo Mi Rey
 Parish Hall & classroom

Wednesday Schedule

8:15 am Head Start
 10:00 am Bible Study
 2:30 pm ASP
 7:30 pm Chancel Choir

Thursday Schedule

8:15 am Head Start
 2:30 pm ASP
 7:30 pm Bible Study

Friday Schedule

8:15 am Head Start
 2:30 pm ASP

Saturday Schedule

7-10 pm - Iglesia Cristo Mi Rey
 Parish Hall & classroom

Visions is published monthly.

The due date for articles for the **March** newsletter is: **Monday, February 22, 2010**

Pastor: *Shannan Vance-Ocampo*
 Pastor Emeritus: Brooks Smith
 Student Pastor: Andrew Scales
 Director of Music: *Sam Chapin*
 WAPC After School Program – 908-755-8202
 Interim ASP Director: *James Winston*
 Visions Editor: *Kathleen Golmont*

Key Cards

We have a new policy for replacement of key cards. Due to the cost of the cards we will need to collect a fee of \$10.00 for replacement of lost key cards.

FEBRUARY CHURCH SCHOOL INFORMATION



During February we will begin the season of Lent. We want to encourage all families in the church to take some special time each day/week at home with your children to focus on our faith. On Sunday February 14th we will be handing out a booklet for each family titled “Magnify the Lord: Lenten Devotions and Activities” which is a fun and engaging way for you and your children to engage in spiritual practices at home with Lent. **Please make sure to pick up the copy for your family on February 14th at church, and if we miss you that Sunday, we will mail your copy home to you.**

We will also be holding two teacher training events (you choose which one is best for you to attend) for **any adult (not just parents!!!)** in the church who wants to help out with teaching church school. They will be taught by Pastor Shannan and held on **Saturday February 13th from 9-11am** and Sunday **February 21st from 11:30am-1:30pm**. The trainings will be held in the Library.

Please take time each month to look over the church school schedule and to reach out to Cori Peloso who is coordinating church school at coriandsteve@hotmail.com to sign up to teach!

	February 7	February  14	February 21	February 28
Scripture/Theme for the Day	Luke 5: 1-11 — Jesus Teaches the Disciples to Fish	I John 3: 16-18 — God Loves us and We Love Others	Luke 4: 1-13 —Can I do the Right Thing?	Matthew 6: 1-21 — What is Lent?
Younger Children	Playing the Disciple “Concentration Game”	Special Valentine’s Day Craft Sunday!!!	Making “perfect” collages and discussion	Lent Crafts and Cooking Projects
Older Children	Making fish shaped pizza	Special Valentine’s Day Craft Sunday!!!	Games about Temptation	Lent Crafts and Cooking Projects
Other Information	Childcare is offered during the congregational meeting	Pick up your Family Devotion Book for Lent!	Don’t forget to continue bringing your offering to church school!	How are your family Lent devotions going? Enjoy using your special book!
Teacher for the Day	Teacher Needed	Rachel W.	Teacher Needed	Teacher Needed

WAPC Activities February 2010

Sunday	Monday	Tuesday	Wednesday	Thursday	Friday	Saturday
	1	2	3 10-11:30am Bible Study 6-8pm—ASP Meeting 7:30pm Choir Rehearsal	4 7-9pm Bible Study	5	6 7-10pm—CR, PH
7 10am-Worship & Church School Congregational Meeting and Luncheon	8 7:30pm Session and Trustees Meetings	9 7-10pm—CR, PH	10 10-11:30am Bible Study 7:30pm Choir Rehearsal	11 7-9pm Bible Study	12	13 7-10pm—CR, PH
14 10am-Worship, Church School & Healing Service 11:30am-Youth Group	15 Church Office Closed— President's Day HS, ASP— Closed	16 6pm—Panacke Dinner for Shrove Tuesday—All Are Welcome!!!	17 ASH WEDNESDAY 10-11:30am Bible Study 7:30pm Worship	18 7-9pm Bible Study	19	20 7-10pm—CR, PH
21 10am-Worship 11:30am— Confirmation Class (Pastor's Study) 11:30am—Adult Lent Study	22 7:15pm, Library C.H.A.T.S.	23	24 10-11:30am Bible Study 6pm—Eco- Ministry Meeting 7:30pm Choir Rehearsal	25 7pm—An Evening with Rev. Ermalou Roller-- Sanctuary	26	27 7-10pm—CR, PH
28 10am-Worship & Church School 11:30am-Youth Group 11:30am—Adult Lent Stud						

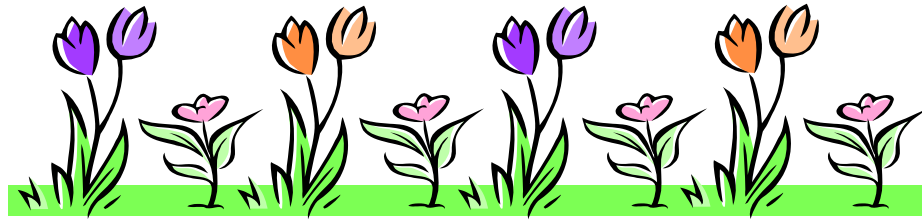
January

S	M	T	W	T	F	S
					1	2
3	4	5	6	7	8	9
10	11	12	13	14	15	16
17	18	19	20	21	22	23
24	25	26	27	28	29	30
31						

Notes: CR: Cristo mi Rey Rental (evenings)—In Parish Hall unless otherwise noted HS: Head Start Rental, M-F 7am-3pm ASP: After School Program, M-F 2:45-6pm ACT: Adult Christians Together WIC: Women, Infants and Children Rental C.H.A.T.S.: Adoption Support Group

March

S	M	T	W	T	F	S
	1	2	3	4	5	6
7	8	9	10	11	12	13
14	15	16	17	18	19	20
21	22	23	24	25	26	27
28	29	30	31			



Easter Plants

We are creating a Spring Garden for Easter Sunday Worship. All who wish to share in this way of celebrating the joy of Christ's Resurrection are invited to fill out this form and place it in the offering plate, or leave it in the church office. Cash or check must accompany all orders. **Please make your check payable to: "PW in WAPC"**.

Enclose payment with your order by: March 21st.

Name: _____

Please write in how many of each you would like to order:

- ___ Azalea(s) \$16.00 each
- ___ Hydrangea(s)..... \$19.00 each
- ___ Daffodil(s)..... \$11.00 each
- ___ Hyacinth(s) \$11.00 each
- ___ Lily(s) \$11.00 each
- ___ Tulip(s) \$11.00 each

___ I will pick up my plant after the service.

___ I would like the committee to deliver my plant(s) to a friend at home or someone who is ill.

My plant is given:

___ In Memory of:

___ In Honor of:

___ To God's Glory for:
